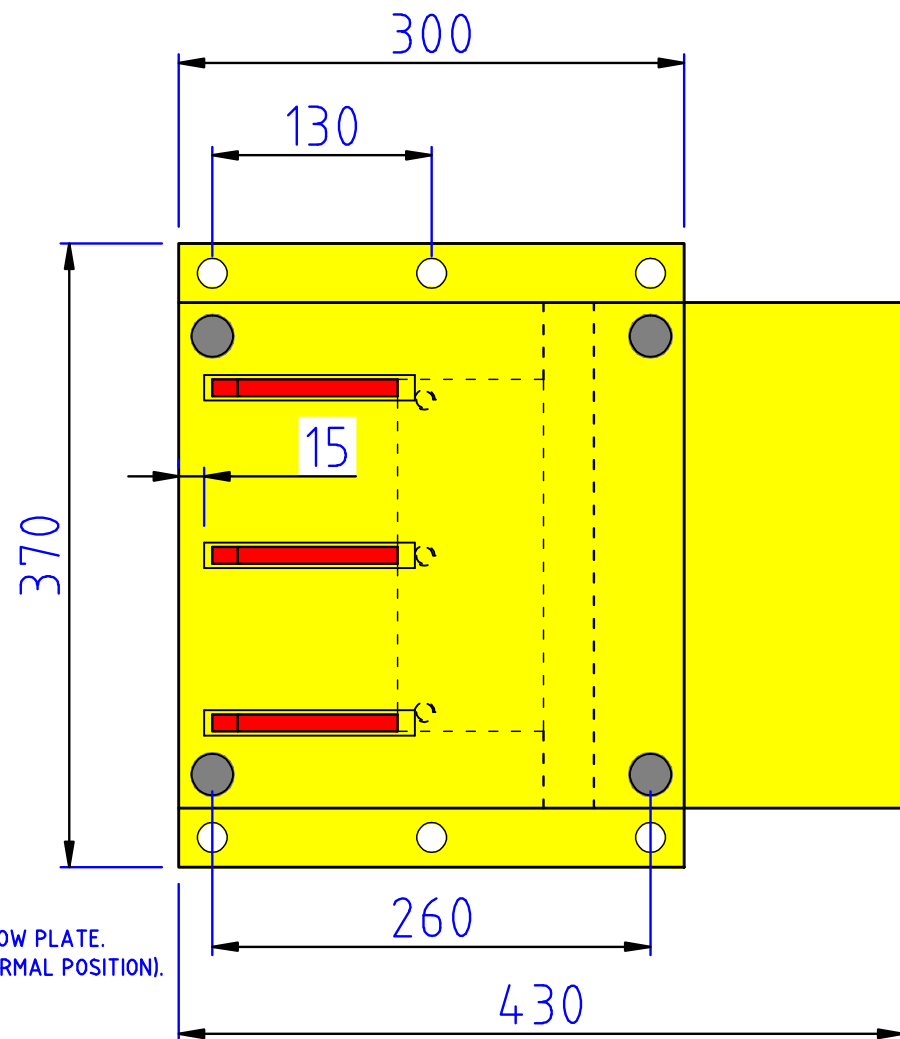
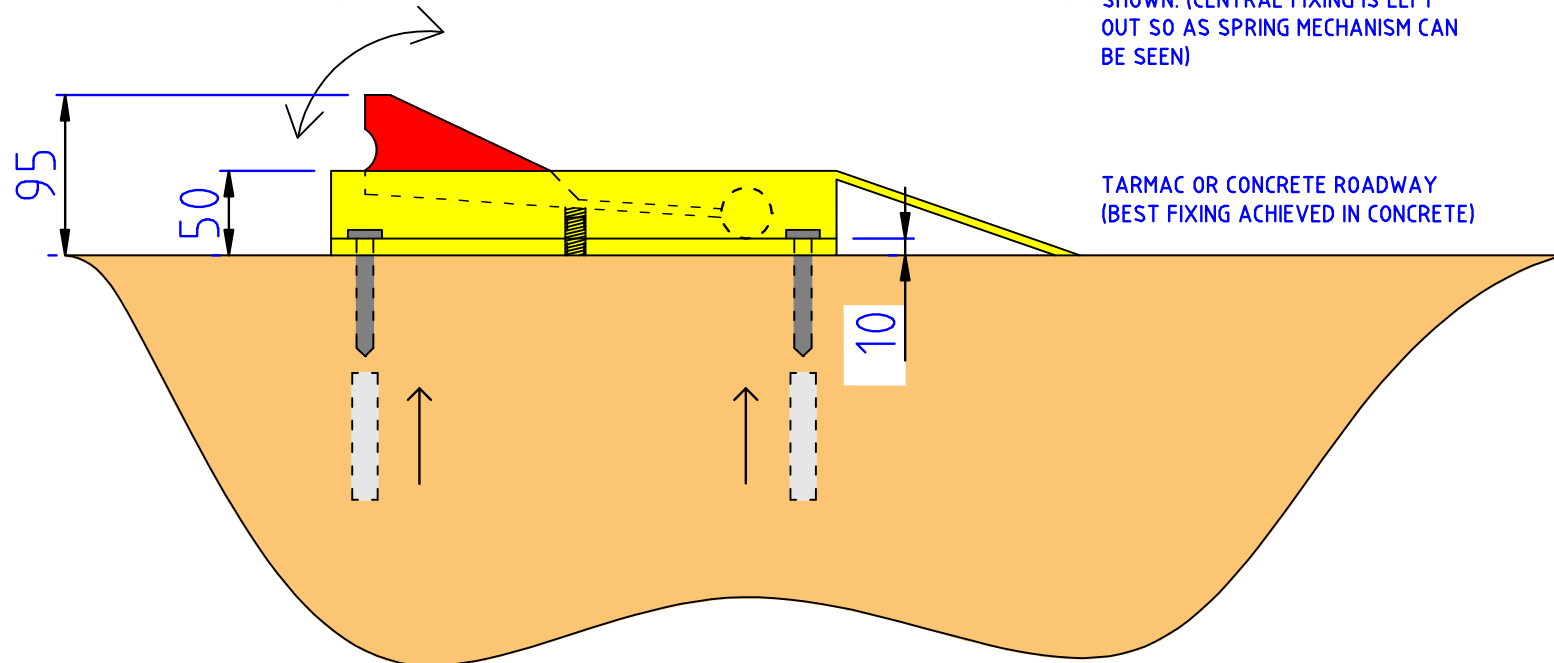


PF5850 SURFACE MOUNTED TRAFFIC FLOW PLATES

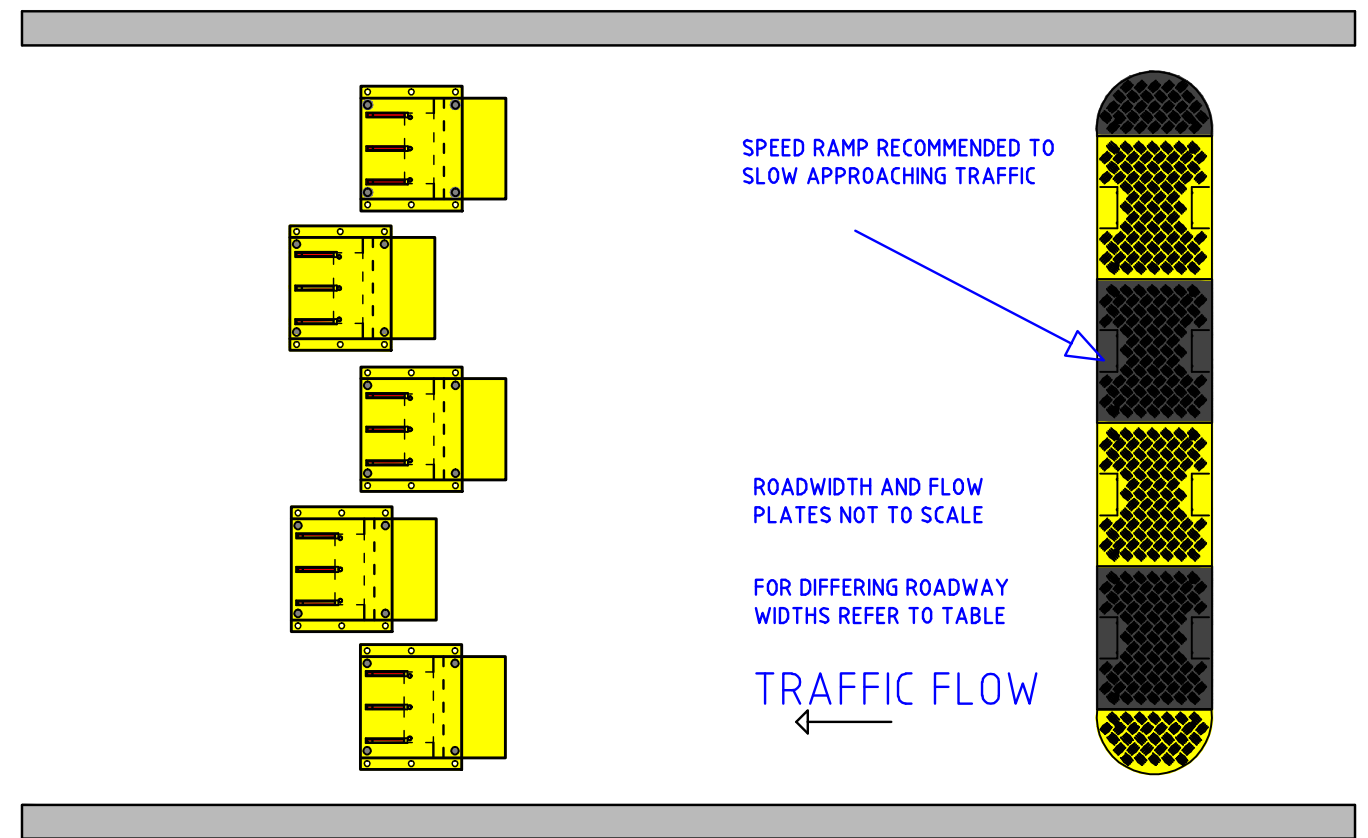


SPRING LOADED FLOW PLATE. SHOWN RAISED (NORMAL POSITION).

SECURING BOLTS AND RAWL PLUGS SHOWN. (CENTRAL FIXING IS LEFT OUT SO AS SPRING MECHANISM CAN BE SEEN)



TARMAC OR CONCRETE ROADWAY (BEST FIXING ACHIEVED IN CONCRETE)



SPEED RAMP RECOMMENDED TO SLOW APPROACHING TRAFFIC

ROADWIDTH AND FLOW PLATES NOT TO SCALE

FOR DIFFERING ROADWAY WIDTHS REFER TO TABLE

TRAFFIC FLOW

ROAD WIDTH METRIC (mm)	IMPERIAL (FEET)	NO. OF PLATES
2000	6.56'	5
2500	8.20'	6
3000	9.84'	7
3500	11.48'	9
4000	13.12'	10
4500	14.76'	11
5000	16.40'	13
5500	18.05'	14
6000	19.69'	15

TRAFFIC FLOW CONTROL PLATES ARE DESIGNED TO ENCOURAGE ONE WAY TRAFFIC FLOW AND PREVENT UNAUTHORISED ENTRY/EXIT WITHIN ANY LOCATION.

MANUFACTURED FROM HEAVY STEEL PLATE, WITH NOISE REDUCTION BUFFERS TO ALLOW SMOOTH OPERATION.

AVAILABLE IN STANDARD YELLOW POWDER COATING WITH RED POWDER COATED TEETH.



UNIT 1, KINGSBURY LINK,
TRINITY ROAD, TAMWORTH,
STAFFORDSHIRE, B78 2EX
TEL: 08451 771122, FAX: 08451 771133
Email: sales@parkingfacilities.co.uk

DRAWN BY : STUART RUSSELL
DATE : 18/03/2009
SCALE : SCHEMATIC

TITLE : PF5850 SURFACE MOUNTED FLOW PLATES

DRAWING NUMBER : PF5850 REVISION : 1